

NOTICE TO MARINERS

Project: Teignmouth to Exmouth MBES Survey

Client: Teignbridge District Council

Survey Period: November 2019 to December 2019

Scope of Work: Mariners are advised that the survey vessel, *MV Titan Discovery*, will be conducting a hydrographic bathymetric survey between Teignbridge and Exmouth. The Titan Discovery will also complete a small survey within Brixham harbour.

The survey between Teignbridge and Exmouth covers 26.4km² from the Mean Low Water contour to the offshore limit defined by the polygon as can be seen in Figure 1. An overview of the survey area in Brixham harbour is provided in Figure 2.

The *MV Titan Discovery* will be displaying the relevant IRPCS day shapes and night lights for vessels restricted in their ability to manoeuvre. *MV Titan Discovery* will NOT be operating towed survey gear but a safe operating distance is requested around the survey vessel.

Table 1 Vessel details


Vessel Image	Vessel Details
	<p>MV TITAN DISCOVERY MCA SCV Code Category 2 (60 miles from a safe haven)</p>

Table 2 Vessel Contact details

MV Titan Discovery	
GSM	07884 068450
Email	titan.discovery@titansurveys.com
Call Sign	2HCR3
MMSI	235102534
VHF Channel	14 & 16

1.1 Outline of Survey Area

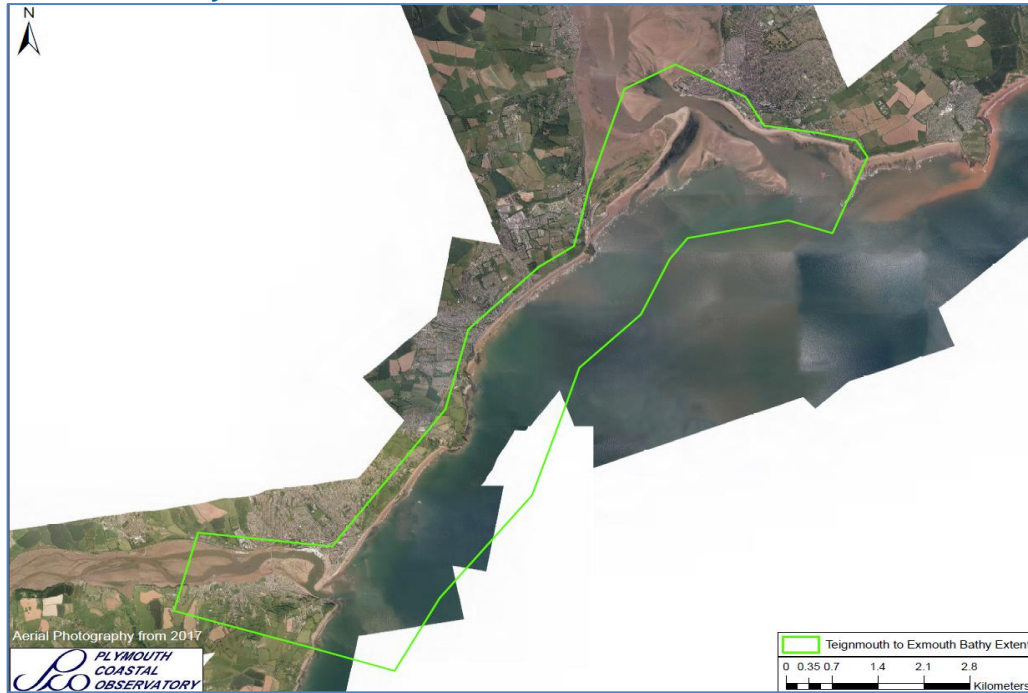


Figure 1 Teignbridge to Exmouth survey area



Figure 2 Brixham Harbour survey area

1.2 Contact details

Titan Environmental Surveys: Matt Ireson (Principal Surveyor)
01656 673673
matt.ireson@titansurveys.com