



# **Teignmouth Harbour Emergency Plan (THEP)**

**May 2017**

## **TEIGNMOUTH HARBOUR EMERGENCY PLAN (THEP)**

### **Amendment Records**

### **Distribution List**

- 1. Introduction**
- 2. Grading of incidents**
- 3. Initiating authority**
- 4. Incident command post**
- 5. Co-ordination and overall in charge.**
- 6. Communications**
- 7. Dealing with the media**
- 8. Clarifying payment/authorization of services**
- 9. Roles & responsibilities**
- 10. Essential telephone directory**
- 11. Resources & equipment directory**
- 12. Various scenarios checklists**
- 13. Exercises & plan updates**
- 14. Port plan**



## Distribution List

### Copy No

- 1 Teignmouth Harbour Commission Harbour Office
- 2 ABP Teignmouth Quays (ABP)
- 3 Pike Ward Ltd
- 4 Pilotage & Marine Services (Teignmouth ) Ltd (Pilots)
- 5 Teignmouth RNLI
- 6 MCA
- 7 Police service (Teignmouth/Torquay)
- 8 Fire & Rescue Service (Teignmouth/Torquay)
- 9 Ambulance Service
- 10 Brixham Coastguard (MRCC)
- 11 Devon County Council
- 12 Teignbridge District Council

### Addresses for distribution:

#### Copy No      Address

1. Teignmouth Harbour Commission, Old Quay House, Old Quay, Teignmouth, Devon TQ14 8ES; Tel No: 01626 773165; [thc@teignmouthharbour.com](mailto:thc@teignmouthharbour.com)
2. ABP Teignmouth Quays, Old Quay Road, Teignmouth, Devon TQ14 8ES; Tel No: 01626 774044; [teignmouth@abports.co.uk](mailto:teignmouth@abports.co.uk)
3. Pike ward Limited, Old Quay, Teignmouth, Devon, TQ14 8EU; Tel No: 01626 772311; [agency@pikeward.co.uk](mailto:agency@pikeward.co.uk)
4. Pilotage & Marine Services Teignmouth c/o Teignmouth Harbour Commission Old Quay House, Old Quay, Teignmouth, Devon TQ14 8ES; Tel No: 01626 773165  
[staff@teignmouthharbour.com](mailto:staff@teignmouthharbour.com)
5. Teignmouth RNLI. Lifeboat House, Lifeboat Lane, Teignmouth TQ14 8EW; Tel No: 01626 777043; [tonywatson@watsonlook.co.uk](mailto:tonywatson@watsonlook.co.uk)
6. Maritime & Coastguard Agency, Spring Place, 105 Commercial Rd, Southampton SO15 1EG; Tel No. 02038 172000; [infoline@mcga.gov.uk](mailto:infoline@mcga.gov.uk)
7. Torquay Police Station, South Street, Torquay, Devon, TQ2 5AH; Tel No.101  
[teignbridge@devonandcornwall.pnn.police](mailto:teignbridge@devonandcornwall.pnn.police)
8. Torquay Fire Station, Newton Road, Torquay, Devon, TQ2 7AD; Tel No: 01803 653700; [admintorquay@dsfire.gov.uk](mailto:admintorquay@dsfire.gov.uk) [Officers30Retained@dsfire.gov.uk](mailto:Officers30Retained@dsfire.gov.uk)
9. West Country Ambulance Service NHS Trust, Abbey Court, Eagle Way, Exeter, Devon, EX2 7HY; Tel: 01392 261500 or 07968 216540; [resilience@swast.nhs.uk](mailto:resilience@swast.nhs.uk)
10. HM Coastguard, Kings Quay, Brixham, Devon, TQ5 9TW; Tel No 01803 882704; [wm.brixham@mcga.gov.uk](mailto:wm.brixham@mcga.gov.uk)
11. Emergency Planning Officer, Devon County Council, County Hall, Topsham Road, Exeter, Devon, EX2 4QD; Tel No:01392 382680 or 07699 734637 (Out of Hours Pager); [epduty@devon.gov.uk](mailto:epduty@devon.gov.uk)
12. Teignbridge District Council, Forde House, Brunel Road, Newton Abbot, Devon, TQ12 4XX; Tel 01626 361101; [epu@teignbridge.gov.uk](mailto:epu@teignbridge.gov.uk)

## **PART 1 THEP**

### **1. Introduction**

13 In accordance with the Civil Contingencies Act 2004 and to comply with the Port Marine Safety Code (PMSC), the Teignmouth Harbour Emergency Plan (THEP) has been developed and is part of the Teignmouth Harbour Commission (THC) Safety Management System (SMS). This plan has been developed by consultation and agreement with all the authorities that are part of the Distribution of this plan: Teignmouth Harbour Commission Harbour Office, ABP Teignmouth Quays (ABP), Sips Agent Pike Ward Ltd, Pilotage & Marine Services (Teignmouth ) Ltd (Pilots), Teignmouth RNLI, MCA, Police service (Teignmouth/Torquay), Fire & Rescue Service (Teignmouth/Torquay), Ambulance Service, Devon County Council and Teignbridge District Council. The plan has been developed to deal with any marine emergency or non routine incident occurring within the THC area of jurisdiction. The plan is supplemented with the ABP Teignmouth Quay (ABP Teignmouth) Emergency plan for their berths and wharfs a copy of which is held by THC.

In addition as part of this Emergency Plan, THC is available for emergencies and contingencies outside the harbour area to the Local Resilience Forum for the provision of any assistance to which their resource and expertise can be applied.

Though various scenario action checklists have been formulated it is recognized every incident develops differently & it is not possible to plan for every contingency that may arise, therefore the plan remains flexible, but ensures that there is effective integrated action by the port authority, emergency services and other participants.

The priorities for action in an emergency are:

1. Save life;
2. Protect the environment;
3. Protect property and safe navigation of the harbour;
4. Contain and Stabilise.

It is not the intention of THEP to take the place of any major disaster or other major incident arrangements made by the emergency services or local authorities.

The purpose of THEP is to ensure that the alarm is raised without delay, that early provision or pertinent information is made available and that there is proper control and direction of personnel and other resources available at the port in conjunction with those of the emergency services in order to provide a co-ordinated plan of action.

THEP has been published in partnership with ABP Teignmouth and also after discussion & agreement with the principal parties who may be involved at anytime. The help and co-operation of all participants is gratefully acknowledged.

The THC Oil Pollution Contingency Plan will also be initiated if necessary.

### **2. Grading of Incidents**

**Class A THEP:** An incident that can be dealt with by the resources readily available or where the initiating authority may need some assistance from one or more land based emergency services. No significant impact on land based authorities is anticipated.

**Class B THEP:** A major incident where there is expected to be a significant impact on land based authorities, where a multi agency tactical and operational level of control is considered necessary.

### **3. Initiating Authority**

In the event of an incident the Harbour Master will be informed through various channels i.e. pilots, Coastguard, Police & public. The Harbour Master will initiate THEP if required.

#### 4. **Incident Command Post (ICP)**

**Class A THEP:** At the Harbour Office , unless an incident occurs at ABP Teignmouth Quays when the ICP will locate at the ABP Teignmouth offices.

**Class B THEP: A multi agency ICP** at the Harbour Office. However if an incident occurs at ABP Teignmouth Quays the ICP will locate at ABP Teignmouth offices if safe to do so. The ICP may be relocated if deemed necessary by the multi agency command.

#### 5. **Co-ordination of Emergencies**

In an emergency incident, the land based emergency services, Coastguard and Harbour Authority will liaise with each other as a multi agency command.

The Police incident officer will co-ordinate the land based emergency services and the Coastguard will co-ordinate the tidal water search & rescue emergency services.

#### 6. **Communications**

VHF CHANNEL	USE
Ch16	Distress Navigation Warnings
Ch12	Teignmouth Port Radio Routine and Emergency operations
Ch 0 & 67	Coastguard Search & Rescue.

#### 7. **Dealing with the Media**

The local media briefing area will be provisionally at the Harbour Masters Office, Old Quay House, Old Quay Street, Teignmouth, Devon, TQ14 9SE

Where there is a multi-agency response, THC will liaise with other agencies regarding media briefings. The police will co-ordinate this operation.

#### 8. **Clarifying Payment / Authorization of Services**

When services of contractors are engaged i.e. divers, salvage officers etc clarification of who has appointed these services should be clear. i.e. ship owner or master (possibly through shipping agent) , port authority etc.

#### 9. **Roles and Responsibilities**

##### **THC**

The THC have the responsibility for the safety of navigation within their area of jurisdiction. They have conservancy and regulatory functions with specific powers to regulate the control and movement of all vessels. The Harbour Master has powers to give directions to particular ships on particular occasions. THC has the power to lay down general rules for the movement of shipping prescribed in local harbour byelaws and notices and does so.

##### **Harbour Master**

Under section 1 of the Dangerous Vessel Act 1985 a Harbour Master can direct a vessel to leave the port or remain outside the port if in his opinion the vessel or its contents might in any way pose a threat to the safety of persons or property. Specifically if its presence in the harbour might involve:

- a. Grave & imminent danger to the safety of any person or property or

- b. Grave & imminent risk that the vessel may be sinking or foundering and thus prevent or seriously prejudice the use of the harbour by other vessels.

NB: The Secretary of State or his Representative can override the Harbour Master's ruling on the vessel and require it to enter the port or move as he so instructs.

## **Maritime & Coastguard Agency**

An executive agency of the Department for Transport (DfT) it is responsible for both the co-ordination of civil maritime Search & Rescue and Counter Pollution operations in UK waters.

### **Police Service**

- To co-ordinate on site operations of the emergency services and other subsidiary organizations;
- Dependent on incident class, will take overall charge of the incident. i.e. a declared major incident with multi-agency command post;
- To decide the site of the Command Control Post (CCP);
- To declare a major emergency;
- To initiate mobilization of other support services, as needed;
- To control pedestrians and vehicular traffic, secure access routes, establishing route diversions as necessary;
- To document casualties and establish a casualty bureau;
- To make mortuary arrangements;
- The identification of victims on behalf of HM Coroner who is the principal investigator when fatalities are involved;
- To appoint a Press Liaison Officer and establish a Press Post;
- The protection and preservation of the scene;
- The investigation of the incident in conjunction with other investigative bodies where appropriate.

### **Fire & Rescue Service**

- To preserve life and safeguard property;
- Fire fighting;
- Rescue of persons trapped;
- Emergency containment of hazardous substances;
- Other special service duties which may be required, dependent upon the incident;
- Devon Fire and Rescue Service have a legal requirement to attend fires within the Devon boundary which includes the River Teign and up to half a mile seaward of the Devon coastline.

### **Ambulance Service**

- To preserve life in conjunction with other emergency services;
- To treat and care for those injured at the scene, either directly or in conjunction with medical personnel;
- To provide an Ambulance Incident Officer at the incident command post;
- Arrange conveyance of casualties and persons from the scene of the incident to designated hospitals;

### **Local Authorities**

In a major emergency the functional role of local authorities is to support the emergency services during the 'lifesaving phase', and to provide those services it considers required for the well being of those in distress.

Devon County Council & Teignbridge District Council have their own Emergency Plans for major emergencies, flooding and oil pollution.

### **Devon County Council**

When called upon by the emergency services, Devon County Council will respond in accordance with its own arrangements and procedures, which include;

- Sending an officer to the multi agency command post;
- Liaison with Teignbridge District Council;
- Assisting the police at evacuation assembly points (EAPs);
- Providing transport from EAPs to emergency rest centres (ERCs);
- Opening and managing ERCs;
- Assisting the police at friends and relative reception centres;
- Opening a major temporary mortuary;
- Activating their own emergency centre, if required;
- Assisting Teignbridge District Council during the recovery phase, if needed.

### **Teignbridge District Council**

When called upon by the emergency services, Teignbridge District Council will be responsible for responding in accordance with the appropriate Emergency Plan possibly embracing the following:

- Sending an officer to the multi agency command post;
- Liaison with Devon County Council, and membership of the emergency rest centre (ERC) and major temporary mortuary (MTM) management teams;
- Specialist advice on building integrity;
- Specialist advice on environmental health matters;
- Activating their own emergency control, if needed;
- Co-ordinating the recovery phase, once the emergency is contained;
- Co-ordinating all local authority services within the area i.e. own services & town & parish councils.



## 10. Essential Telephone Directory

	<b>Tel No.</b>	<b>Mobile</b>	<b>Fax</b>
<b>THC</b>			
Harbour Office	01626 773165	07775 445816	
Harbour Master 24/7/365		07796 178456	
<b>Emergency Services</b>			
Emergency Services	999		
Police:			
Devon&Cornwall HQ	101 (24hr switchboard)		
Teignmouth			
Fire & Rescue	01392 872200		01392 872350
Control			
(Clyst St George)	01392 872288 (office hours)		
Ambulance	0845 604 7093 (24 hr)		01392 360198
Control			
Coastguard			
MRCC Brixham	01803 882704		
<b>Devon County Council</b>			
Duty Emergency	01392 382680 or 07699 734637 (Out of Hours Pager);		
Planning Officer	<a href="mailto:epduty@devon.gov.uk">epduty@devon.gov.uk</a>		
Environment			
Control & Info. Room	01392 383329 (24hr)	01392 382634	
<b>Teignbridge District Council</b>			
Emergency Planning	01626 361101	07887 824702	
Officer			
Duty Engineer	07796 611748 (24hr)		
TeignCare Duty Room	01626 355135		
(24 hour)	0800 132449		
<b>Environment Agency</b>			
Incident reports	01392 442024 (24hr)		
<b>ABP Teignmouth Quays</b>			
Office	01626 774044		01626 776240
Port Manager	01626 774044	07725 638344	
Operations Manager	01626 774044	07763 877822	
ABP Marine Advisor		07727 639459	
<b>Pike Ward Ltd</b>			
Office	01626 772311		01626 770218
<b>'Teign C' Crew</b>			
Skipper	01626 773165		07798 647826
<b>Teignmouth Pilots</b>			
Pilot Boat	07770 841453		
<b>Harbour Patrol</b>			
Harbour Patrol	07796 178456		

## **Teignmouth Maritime Services (TMS)**

Office	01626 866066	07970 287856	01626 864288
	01626 778855	07970 287864	

## **Teign Diving Centre**

Office	01626 773965	07971-293011
--------	--------------	--------------

## **SOSREP (via CG)**

### **11. Resources & Equipment Directory**

#### **11.1 Watercraft**

Teign C (THC)	14m Damen Stan Tug / dredge bed leveller, with limited fire fighting capacity.
Syd Hook (THC)	12m designated pilot boat.
Barbara (THC)	7m open launch.
RIB (THC)	6m open RIB 90HP outboard (can be trailered)

Teignmouth Maritime Services:	1x 45ft workboat with HIAB crane (1tonne)
	2x 45ft pax boat
	1x 18ft launch
	Various other small craft & pontoons etc

RNLI: Teignmouth (Inshore) & Torbay (Open Waters): Via Coastguard.

Additional tugs operating within the area maybe sourced through the Coastguard. See 'section 8 Salvage & Towage Experts' for other possible sources.

#### **11.2 Fire fighting Capacity**

THC vessels: Teign C & Syd Hook have some limited fire fighting capacity.  
i.e. fitted with fire hoses and pumps.

#### **11.3 Forklift Trucks**

ABP Teignmouth (for emergencies) : 6 forklift trucks, working loads between 3 & 5 tonnes.

Addicott Electrics (for hire) : 3 forklift trucks ; 1 x 2.5 tonne & 2 x 5 tonne working loads. Tel nos 01626 774087 or 01626 772332.

GEMS (office admin) 01626 879879 (24 hour emergency 07790 018497)

#### **11.4 Cranes**

ABP Teignmouth (for emergencies): 3 Cranes

Addicott Electrics:	1 lorry load capacity 2.5T with crane (2T swl)
	1 lorry load capacity 12 T with crane (9T swl)

J. Spence: cranes up to swl 50 tonne  
Tel 01626 366993 or mobile 07836 612667

SW Cranes: Tel 01392 256148

## 11.5 Oil Pollution Equipment

Tier 1 resources : held by THC

Tier 2 resources: Available through THC and ABP Teignmouth Tier 2 responder, Teignmouth Harbour Oil Pollution Contingency Plan refers.

## 11.6 Pumps

THC (Salvage Pump)  
Fire Brigade  
Coastguard  
RNLI  
Teignmouth Maritime Services  
Teign Diving Centre

## 11.7 Divers

TMS  
Teign Diving Centre

## 11.8 Towage & Salvage Experts

Portland Towage	Tel 01305 824044
Felixarc Marine Ltd (Howard Smith Towage & Salvage)	Tel 01502 509215
DV Howells Lt (Milford Haven)	Tel 01646 697041
Smit Tak BV	Tel +31 454 9911
TMS	

## 11.9 Marine Surveyors

Curtis Marine LTD Tel 01803 813832 or 07770 978676

## 12. Various Scenario Checklists

It is recognised that each emergency will have a unique combination of circumstances and the most effective response will depend on a degree of flexibility. These checklists have been formulated to suggest what possible action may be taken in the most likely emergency situations:

### Index

- a) Grounding of Vessel
- b) Collision or emergency involving vessels and structures (Quays, Piers, Bridge) in the harbour
- c) Fire or explosion of any vessel at moorings or underway
- d) Vessel approaching the harbour on fire, or in danger of sinking, or having sustained damage hazarding the vessel.
- e) Fire or explosion on a vessel alongside the quay.
- f) Fire or explosion on a quay.

### a) Grounding of Vessel

- 1) Evaluate situation, determine assistance required, inform appropriate emergency services.
- 2) Check for missing persons & casualties, administer first aid
- 3) Keep unwanted traffic & persons clear
- 4) Check vessel for damage : sound bilges, tanks etc
- 5) Apply necessary damage control.
- 6) Check for pollution, apply oil contingency plan if necessary.

- 7) Check if Dangerous Cargo is onboard and act accordingly.
- 8) Avoid: stresses to vessel, capsizing, breaking vessels back, sinking, etc.
- 9) Assess tide, flooding or ebbing.
- 10) Decide whether to move vessel, or anchor vessel & await higher tide.
- 11) Use available tugs & workboats as required.
- 12) Check actual draft of vessel, compare to proper floating draft of vessel to determine how much aground.
- 13) Trim vessel: transfer ballast or weights, ballast, deballast, etc.
- 14) Lighten vessel: remove cargo etc.
- 15) Inform all necessary personnel in THEP telephone directory.
- 16) Arrange all required equipment. (Resources/equipment directory refers).

**b) Collision or emergency involving vessels and structures (Quays, Piers, Bridge) in the harbour**

- 1) Evaluate situation, determine assistance required informing appropriate emergency services.
- 2) Check for missing persons and casualties, administer first aid.
- 3) Keep unwanted traffic and personnel clear
- 4) Check vessel for damage, sound tanks, bilges etc.
- 5) Apply necessary damage control: Pumps, heeling/trimming v/l, wedges etc.
- 6) Check for pollution and apply oil pollution contingency plan if necessary.
- 7) Check if dangerous cargo is onboard and act accordingly
- 8) Avoid vessel sinking in navigation channel.
- 9) Decide whether to: move vessel to shallow water / beach vessel / or secure vessel alongside berth, etc.
- 10) Inform all necessary personnel in THEP telephone directory.
- 11) Arrange all required equipment. (Resources/equipment directory refers).

**c) Fire or Explosion on any vessel at moorings or underway**

- 1) Evaluate situation, determine assistance required and inform appropriate emergency services
- 2) Check for missing persons and casualties, administer first aid.
- 3) Keep unwanted traffic and personnel clear
- 4) Check vessel for damage, sound tanks, bilges etc.
- 6) Extinguish fire.
- 7) Apply necessary damage control: Pumps, heeling/trimming vessel, wedges etc.
- 8) Check for pollution and apply oil pollution contingency plan if necessary.
- 9) Check if dangerous cargo is onboard and act accordingly
- 10) Avoid vessel sinking in navigation channel.
- 11) Decide whether to: move vessel to shallow water / beach vessel / or secure vessel alongside berth, etc.
- 12) Inform all necessary personnel in THEP telephone directory.
- 13) Arrange all required equipment. (Resources/equipment directory refers).

**d) Vessel approaching the harbour on fire or in danger of sinking, or having sustained damage hazarding the vessel.**

Permission to enter the harbour will be decided by the Harbour Master, who will carry out a risk assessment to determine whether it is safe to enter, and if so, how the operation should be carried out.

NB: The Secretary of State can override the harbour masters decision . ( Dangerous Vessels Act 1985 refers)

**e) Fire or explosion on a vessel alongside a quay**

- 1) Evaluate situation, determine assistance required and inform appropriate emergency services
- 2) Rescue survivors and casualties, administer first aid.

- 3) Determine if dangerous cargo/substances onboard or in vicinity and act accordingly.
- 4) Activate oil pollution contingency plan if necessary.
- 5) Provide access for emergency services
- 6) Clear area of traffic & personnel and other vessels.
- 7) Extinguish fire.
- 8) Avoid sinking or capsizing of vessel.
- 9) Liaise with emergency services on their arrival.
- 10) Inform all necessary personnel in THEP telephone directory.
- 11) Arrange all required equipment. (Resources/equipment directory refers).

**f) Fire or explosion on quay**

- 1) Evaluate situation, determine assistance required and inform appropriate emergency services
- 2) Rescue survivors and casualties, administer first aid.
- 3) Determine if dangerous cargoes in area.
- 4) Activate oil pollution contingency plan if necessary.
- 5) Provide access for emergency services
- 6) Clear area of traffic, personnel and shipping.
- 7) Extinguish fire.
- 8) Hand over to emergency services on their arrival.
- 9) Inform all necessary personnel in THEP telephone directory.
- 10) Arrange all required equipment. (Resources/equipment directory refers.)

**13. Exercises and Plan Updates**

Exercises:

- \* Annually Internal alerting exercise or Incident.
- \* Bi-Annually An exercise or Incident deploying THC resources.
- \* As Required An exercise or incident involving other organizations.

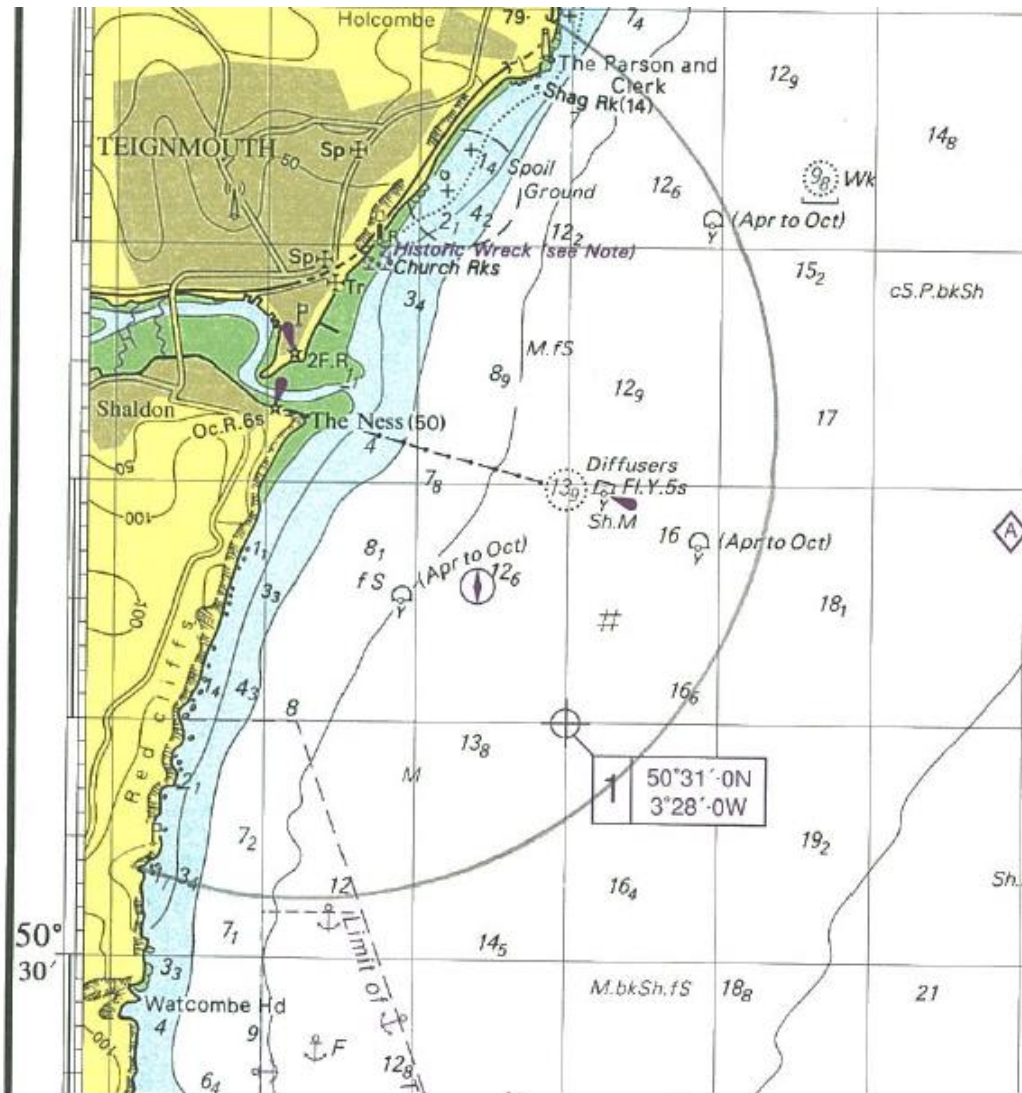
A log of these exercises and incidents is maintained in the form the Incident and the Exercise Log kept in the Harbour Masters office

Plan updates:

The plan will be maintained and updated by the Harbour Master.

# PORT PLANS

Chart showing Pilotage area UKHO Chart No 3315



Ordnance Survey Map of Harbour Area

